

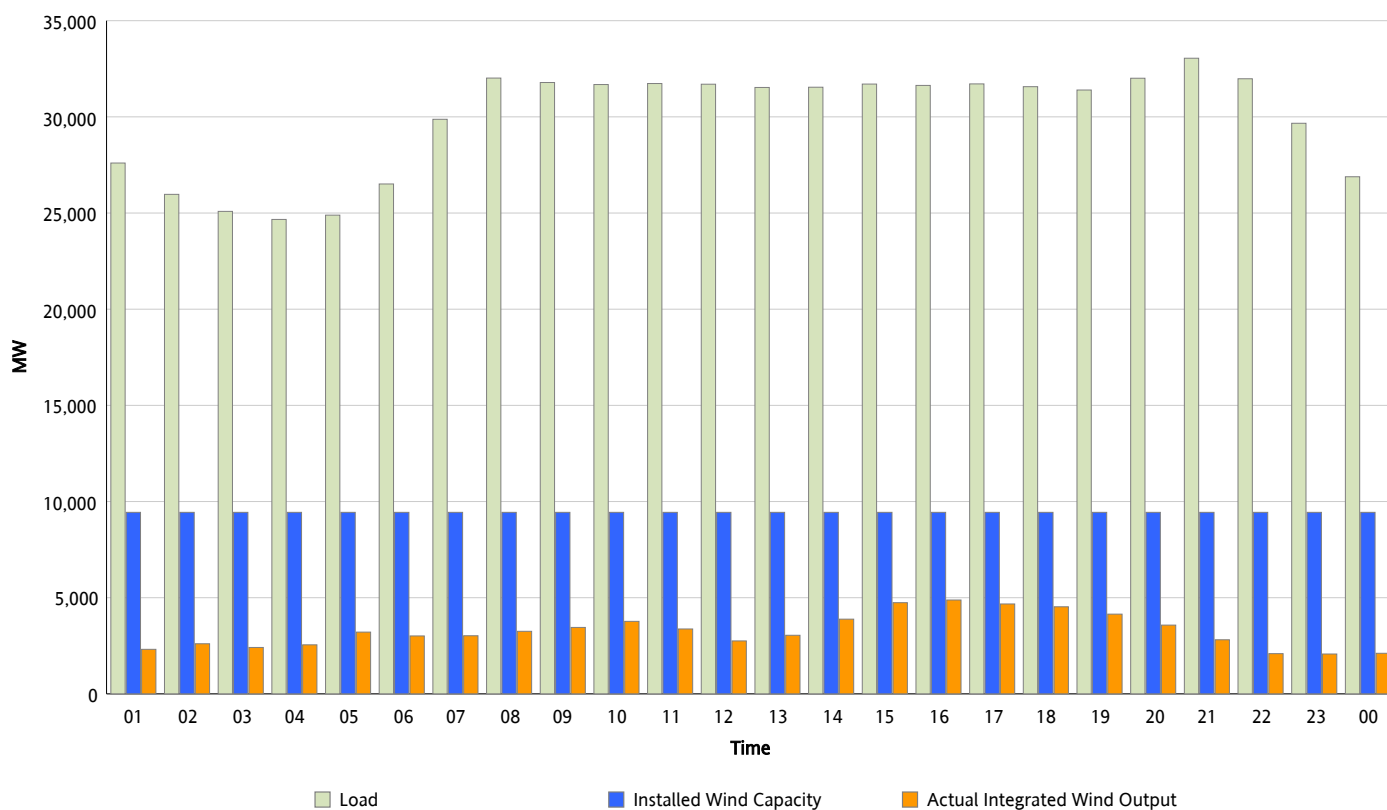


## ERCOT Grid Operations

### Wind Integration Report : 03/20/2012

Peak Load	33,048 MW
Load Peak Hour (HE)	21
Wind Over Peak	2,812 MW
Wind Record 03/18/12	7,917 MW
Max Wind Value*	5,108 MW
Wind Peak Time	15:15
Wind Integration %	16.11 %

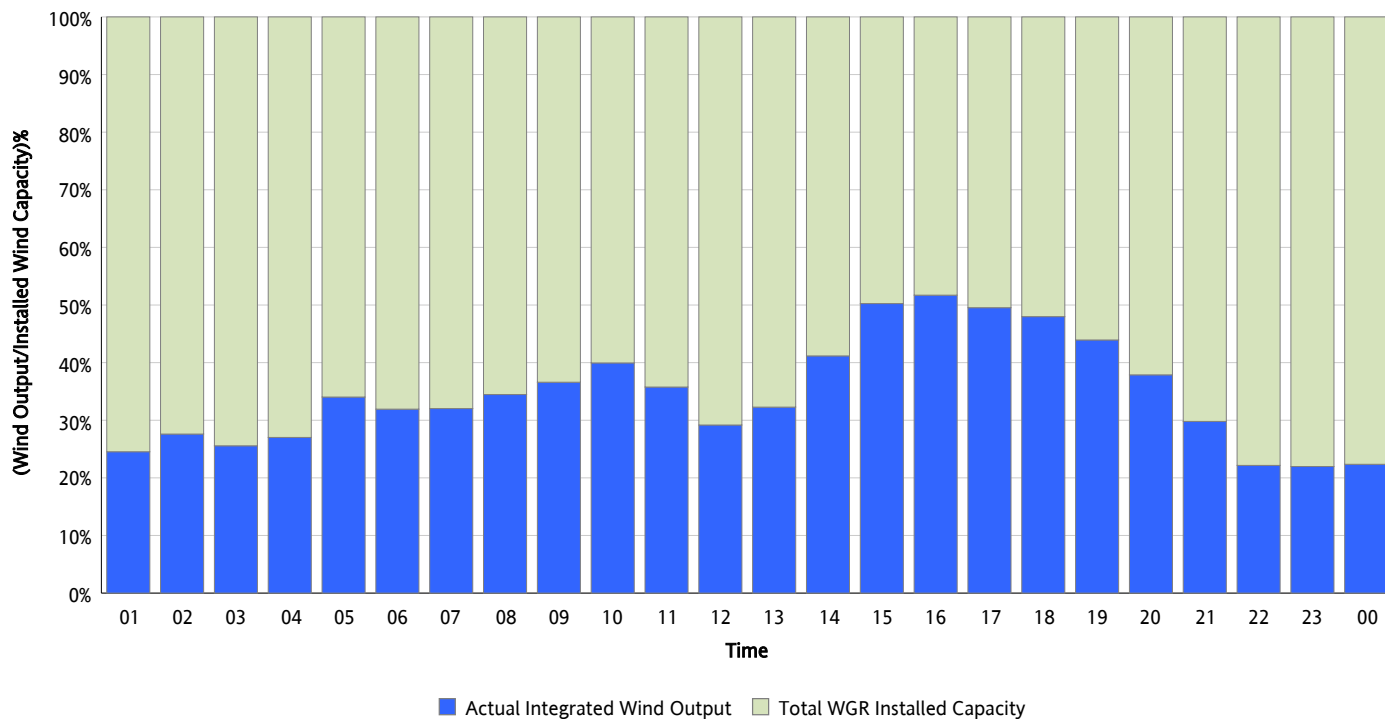
**Hourly Average Actual Load vs. Actual Wind Output**  
**03/20/2012**



*\* Wind Record and Wind Max represent instantaneous values and the rest of the values are integrated over the hour*

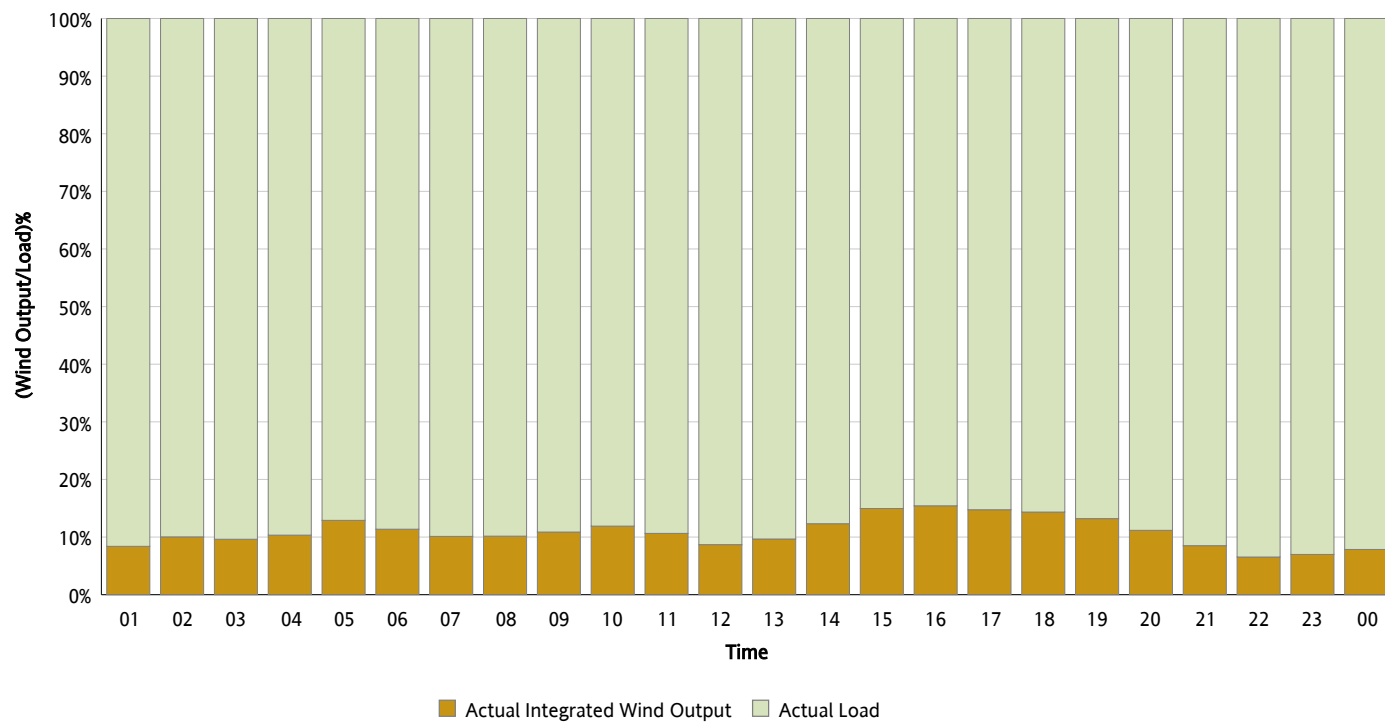
## Actual Wind Output as a Percentage of the Total Installed Wind Capacity

03/20/2012



## Actual Wind Output as a Percentage of the ERCOT Load

03/20/2012



## ERCOT Load vs. Actual Wind Output

03/13/2012 - 03/20/2012

